

# Kroy Railway Group: Technology & Rail Safety



**Barry Carta**

Co-Founder | Kroy Railway Group



**Chris Markuson**

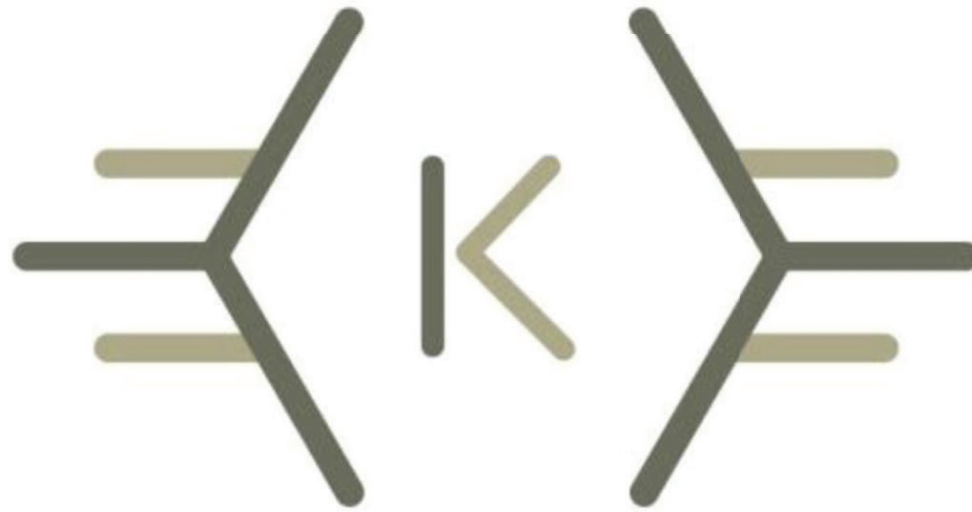
Co-Founder | Kroy Railway Group



**Connor Polomsky**

Co-Founder | Kroy Railway Group





# Kroy Railway Group

Technology & Rail Safety

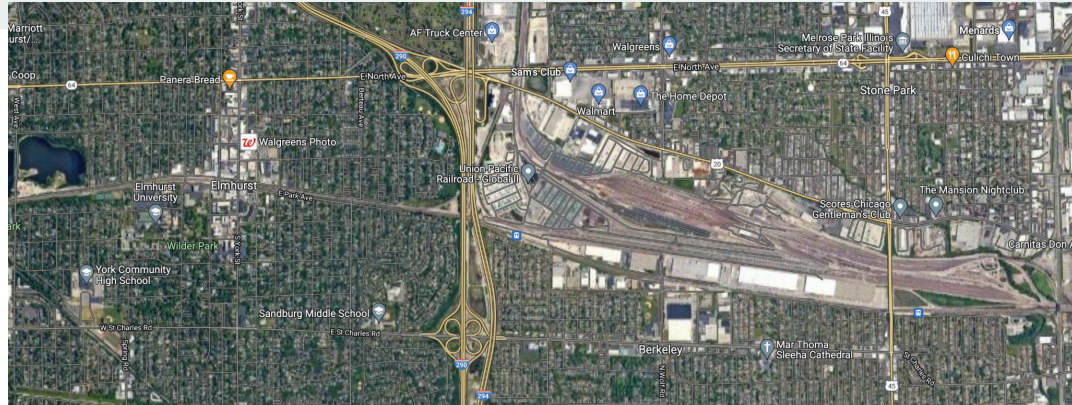
# Community Rail Issues

- Delays at highway-rail crossings
  - First responder response delays
  - Commuter traffic congestion
- Trespasser Prevention
- Suicide Prevention
- Unsafe rail condition detection



LiDAR/Camera Sensor Testing

# Our Story



- York High School (Elmhurst IL) student project
- Filed as an LLC on July 29th, 2020
- Relationship with the DRSC
  - Recognized how we could use our technology to help combat pedestrian safety issues along rail lines

# Train & Commuter Traffic Identification

- Map expected blockages 10+ minutes in advance
- Map expected clearing times

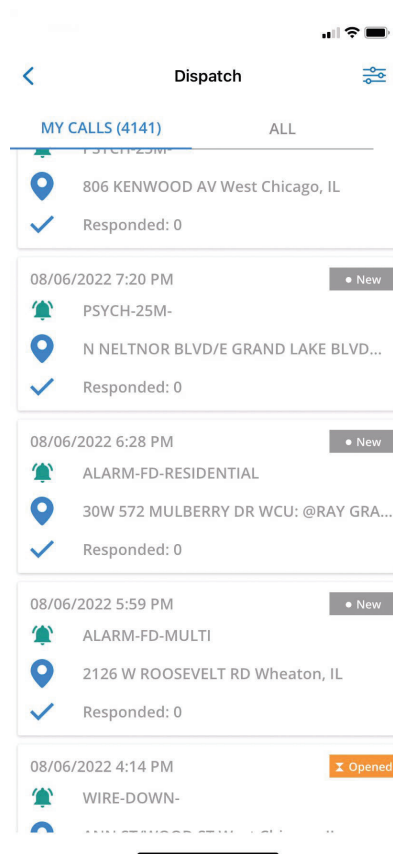
Device: West Chicago 5M-South Demo  
Direction: Northbound  
Speed of train (MPH): 11.24  
Expected Arrival to Ann St.: 09:20:52  
Expected Arrival to Church St.: 09:22:02  
Expected Arrival to Washington St.: 09:22:46  
Expected Arrival to W Hawthorne Ln.: 09:28:59

Train Blockage Data (West Chicago Demo unit)



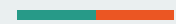
Elmhurst IL Quarry Grade Crossing Commuter Traffic  
1-min interval timelapse

# First Responder Train & Commuter Traffic Identification



- Real-time data directly into CAD
- Dynamic dispatch
- FirstNet Mobile Network



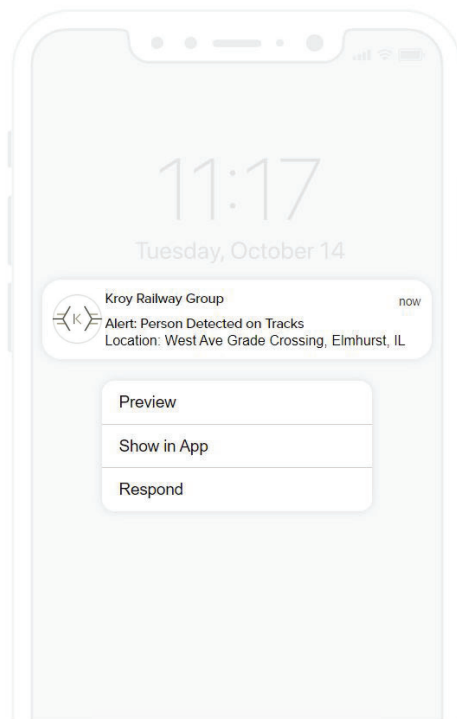


## Trespasser Detection

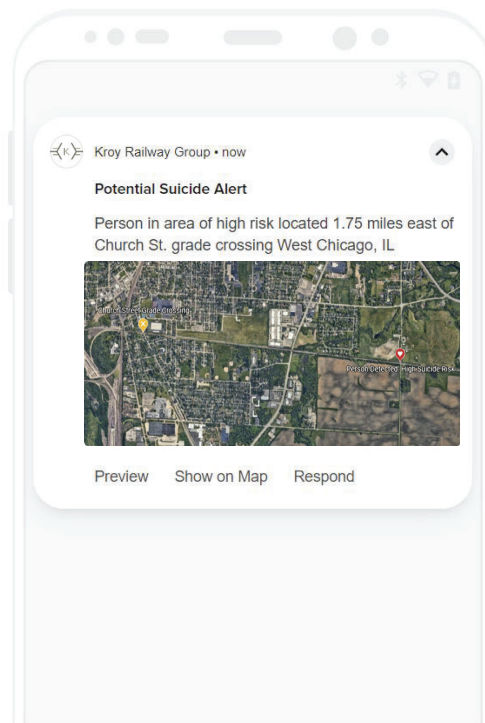


Kroy Railway Group

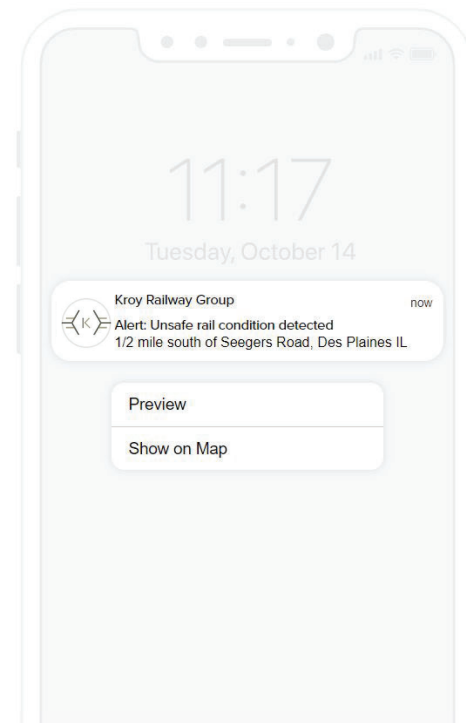
# Trespasser Alerts



Trespasser Alert



Potential Suicide Alert



Unsafe rail condition Alert





Version 1 - Camera + LiDAR



Version 2 - Dual LiDAR

## How Our Sensors Work

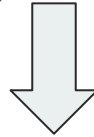
- Dual Lidar
  - Continuous predictive analytics when scaled
- Camera and Lidar
  - Camera and Lidar work together to determine what object is obstructing the lidar and if that object will block a railroad crossing
- Installation



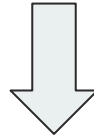


## Future Steps

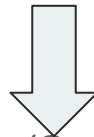
Scaling sensor infrastructure (emphasis on Predictive Analytics network)



Beta Testing Trespassing Alerts (multi-system)



Trespassing Alerts offered as a Kroy Service/Built into 3rd party CAD



CAD Systems/Commuter Tools